

Sanitary Flanged Sight Tubes & Pipe Spool Pieces

BioConnex Sanitary Flange Sight Tubes and Pipe Spool Pieces are available in custom lengths to suit your unique applications.

We can fabricate spools to match your pre-existing setup to maximize your time and resources. Pipe spools are constructed of polysulfone, polypropylene and PVDF. Durable yet affordable, they can be placed in service permanently or be considered disposable. Sanitary flanges conform to ISO 2852.



Sight Tubes & Pipe Spool Pieces are available in: are available in: 3mm, 6mm, 10mm, 12mm, .25", 1", 1.5", 2", 3", and 4"

Sanitary flange Sight Tubes & Pipe Spool Pieces Features:

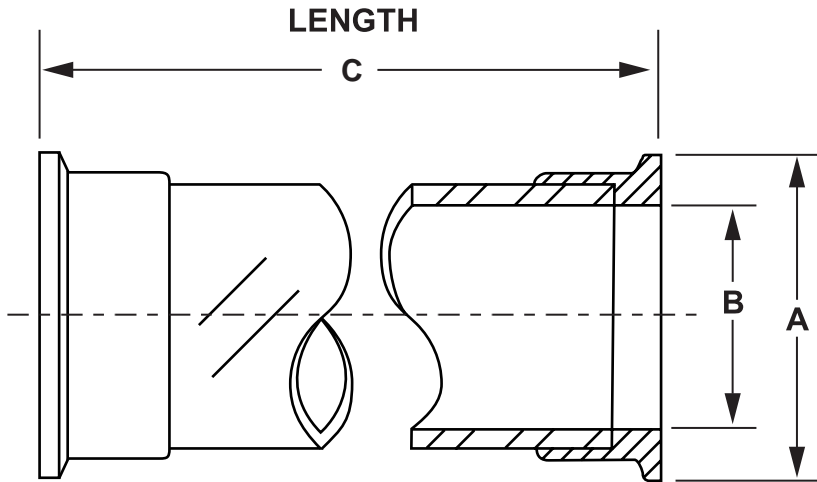
- Sterilizable
- Recommended working temperatures and pressure:
 - Polysulfone: 40-150 psi @ 70° F
 - Polypropylene: 40-120 psi @ 70° F.
 - PVDF: 60-160 psi @ 70° F

For use with:

- Bioprocess containers
- Bioreactors
- Fermentors
- Filling machines
- Filtration and purification systems
- Mixing containers and vessels
- Rigid piping systems

Sanitary Flanged Sight Tubes & Pipe Spool Pieces

Dimensional and Physical Properties



Size	Part Number	Dim "A" (in)	Dim "B" (in)	Dim "C" (in)	Max Working Pres. (psi) @ 70° F
3mm	(PP, PVDF, PS) 3MMSPPOOL	0.992"	0.118"	Customer Specified	150
6mm	(PP, PVDF, PS) 6MMSPPOOL	0.992"	0.236"	Customer Specified	150
10mm	(PP, PVDF, PS) 10MMSPPOOL	0.992"	0.394"	Customer Specified	150
12mm	(PP, PVDF, PS) 12MMSPPOOL	0.992"	0.472"	Customer Specified	140
MINI	(PP, PVDF, PS) 075SPPOOL	1.984"	0.560"	Customer Specified	140
1"	(PP, PVDF, PS) 100SPPOOL	1.984"	0.856"	Customer Specified	140
1-1/2"	(PP, PVDF, PS) 150SPPOOL	2.516"	1.356"	Customer Specified	120
2"	(PP, PVDF, PS) 200SPPOOL	2.516"	1.856"	Customer Specified	120

Resin Data	Tensile Strength	Flexural Modulus	Hardness	Heat Deflection	Water Absorption	Maximum Recommended Working Temperature F°
Polypropylene used in Spools	3900 psi (2 in/min) ASTM D 638	160000 psi ASTM D 790	80, R-scale, Rockwell D-785	87.8° F @ 66 psi ASTM D 648	.01 % (24 hour duration)	180° F
PVDF used in the Spools	5000 - 7000 psi ASTM D 638	240000-335000 psi ASTM D 790	76 - 80 Shore D ASTM D 2240	257 - 284° F @ 66 psi ASTM D 648	.01 - .03 % (24 hour duration)	240° F
Polysulfone used in Spools	10.2 kpsi ASTM D 638	390 kpsi ASTM D 790	120, R-scale Rockwell	345° F @ 264 psi ASTM D 648	.3% (24 hour duration)	240° F

Physical properties provided as general guidelines only. It is the end-users responsibility to ensure that the above mentioned products are compatible with the intended application and that the products are in compliance with all applicable regulatory requirements for use. User assumes all risk of usage.

For additional information please contact:



P.O. Box 126, Readington, New Jersey, USA
 Phone: +01-908-722-6948 Fax: +01-908-526-3256
www.bioconnex.com